



SHIRE OF IRWIN RATING INFORMATION 2023-2024

Council rates are a contribution each property owner makes towards the cost of providing facilities and services in the Shire of Irwin

Gross Rental Value (GRV)

Rates are levied based on the values of the rateable properties as provided by Landgate. Landgate calculates the Gross Rental Values (GRVs) on how much rent you could earn each year if your property was rented out. GRVs are used for urban properties, and these are re-assessed once every four to five years. The current values are based on the revaluation effective 1 July 2019.

Unimproved Values (UV)

Unimproved Values (UVs) are calculated by Landgate based on what your land is expected to sell for in its current condition. UVs are used as the basis for the levying of rates for rural properties. Annual revaluations apply for all rural land within the Shire.

Mining UV

Land in which a mining tenement has been issued by the Department of Mines, Industry Regulation and Safety is rated higher than the UV rural rate to ensure fairness and equity due to the relatively lower valuation determined by Landgate. Also, to recognize the often-short-term nature of mining projects in the region.

Minimum Rates

Council believes that in view of the level of service and facilities available to all ratepayers, the minimum rate is representative of the minimum contribution that should be made by owners of all rateable land regardless of the value of the property. A minimum rate of \$1,050 applies for all rating categories in 2023/2024.

Emergency Services Levy

All local governments are required to collect the Emergency Services Levy (ESL) on behalf of the Department of Fire & Emergency Services (DFES). For further information visit www.dfes.wa.gov.au.

Overdue Rates

Don't be late! Rates that are not paid by the due date will incur an interest charge of 7% per annum, calculated daily. Interest will be applied to instalments that are outstanding past the due date, at a rate of 5.5% per annum.

Rate Charges

Rates in the dollar for 2023/2024 financial year for each rating category are shown below:

Rate Category (GRV)	
General Rates	12.137
Rate Category (UV)	
Rural General Rate	1.3019
Mining Differential Rate	21.361

Objections to Valuations

Property Valuations are set by Landgate and are used to determine the rates payable on each property. If you have a query with your property value, or wish to lodge an objection, you can contact Landgate on 9273 7373. More information can be found on their website. www.landgate.wa.gov.au/valuations

Objections must be lodged within 60 days after the issue of the rates notice. Rates must still be paid in full by the due date pending the outcome of the objection. A refund will be issued if the objection is upheld.

Pensioner and Senior Discounts

If you are a Pensioner or Senior, you may be able to apply for a rebate on your Council Rates and Emergency Services Levy. Please note that rubbish and pool fees are not subject to a rebate.

To be eligible for a rebate, an applicant must be:

- The owner, and reside at the property on 1 July of the rating year; and
- Hold a Pensioner Concession Card; or
- Hold a Senior Concession Card; or
- Hold a Senior Concession Card and Commonwealth Seniors Health Card

Eligible pensioners are entitled to claim a rebate of 50% of the current year's rates, up to a maximum of \$750. Seniors who meet the eligibility criteria are entitled to claim a rebate of 25% of the current years rates, up to a maximum of \$100.

Concessions are applied after the eligible ratepayer has registered their entitlement with the Water Corporation. Pro-rata rebates may be offered. You must notify the Water Corporation if you change your circumstances in relation to your concession, ownership of the property or whether you continue to occupy the property.



Rates Payment Options

The Shire provides three options for payment of your rates:

OPTION 1 – Pay in Full (By 18 September 2023)

OPTION 2 – Pay in Two Instalments

OPTION 3 – Pay in four Instalments

First Instalment Due: 18 September 2023	Second Instalment Due: 23 November 2023
Third Instalment Due: 25 January 2024	Fourth Instalment Due: 28 March 2024

How to pay your Rates

Your rates can be paid:

- In person at the Shire of Irwin Office
- Over the phone
- By mail
- Online with BPAY
- Online with Mastercard or visa www.irwin.wa.gov.au

If you are having trouble paying your rates by the due date, please contact the Shire of Irwin's Rates Officer to discuss alternative payment arrangements. We can help you establish a weekly, fortnightly or monthly payment plan. Note that rates must be paid within the financial year and interest will be charged on overdue amounts.

Incorrect Details

If your details/address is incorrect, you can contact the Shire to get a change of details form; or you can send an email to rates@irwin.wa.gov.au advising us of your new details; or you can complete the change of details section on the back of your rate notice and return it to the Shire. It is important to ensure your contact details are up to date so the Shire can send correspondence to the correct address.

Instalments

All arrears and interest still outstanding on your account needs to be paid in full along with the first instalment for 2023/24 for you to be eligible to enter into the instalment options. The cost of the instalment plans will comprise of 5.5% interest per annum, calculated from the date the first instalment is due, together with an administration fee of \$5 for each instalment notice. Please note these charges are only incurred after the first instalment.

Contact Your Elected Members

Shire President

Cr Michael Smith

crsmith@irwin.wa.gov.au

Deputy Shire President

Cr Isabelle Scott

crscott@irwin.wa.gov.au

Councillors

Cr Grant Eva

creva@irwin.wa.gov.au

Cr Andrew Gillam

crgillam@irwin.wa.gov.au

Cr Mark Leonard

crleonard@irwin.wa.gov.au

Cr Hayley Palmer

crpalmer@irwin.wa.gov.au

Cr Elyce Tunbridge

crtunbridge@irwin.wa.gov.au

Cr Barry Wyse

crwyse@irwin.wa.gov.au

Shire President's Message to the Community

I would like to acknowledge and thank Councillors, our Shire CEO and staff for their hard work and commitment in 2022/23.

Each financial year we must thoroughly and thoughtfully prepare a new budget to support the growing needs of our entire community. While Council and Shire staff work hard to leverage as much revenue from other sources as possible, including fees and charges, capital grants and contributions, rates revenue accounts for approximately 65-70% of Council's total operating revenue.

Our 2023/2024 Annual Budget has been carefully considered to ensure continued provision of quality facilities, community buildings, recreational areas, and efficient administrative services. This year's Budget includes a \$2.5m increase capital works expenditure. This extra allocation will allow us to undertake projects that are a key priority for the community such as the ongoing upgrades and maintenance grading of the entire unsealed, rural road network.

Council resolved a 5.9% rates revenue increase for the 2023/2024 Budget. Rates allow the Shire to deliver essential services and projects such as

- the upkeep and maintenance of infrastructure such as the Foreshore, parks, roads, footpaths and street lighting,
- bin collections and operation of the Transfer Station,
- community and recreation services including operating the Rec Centre,
- building & planning approvals,
- and community events and activity programs.

On behalf of the Council and staff I would like to thank our ratepayers for their continued support of our Shire.

Yours Sincerely

Mike Smith

Shire President

PMB 21, 11-13 Waldeck Street Dongara WA 6525

I T:9927 0000 | E:reception@irwin.wa.gov.au |

www.irwin.wa.gov.au

FIREBREAK & FUEL HAZARD REDUCTION NOTICE

2023 - 2024

First and final notice - Deadline 29th October 2023

TO ALL LAND OWNERS AND/OR OCCUPIERS OF LAND IN THE SHIRE OF IRWIN

Firebreaks must be installed and maintained clear of flammable materials from
29 OCTOBER 2023 up to and including 15 APRIL 2024

RURAL LAND

Land other than that within the Dongara Port Denison and Irwin Town Sites:

- 1.1 Maintain an Asset Protection Zone (APZ).
- 1.2 Have firebreaks not less than 3 metres in width and within 50 metres of the perimeter of any building/haystack or groups of buildings/haystacks situated on the land. Such firebreaks must completely encircle the building and/or hay stack.
- 1.3 Have firebreaks not less than 5 metres in width around all unattended motors and uncleared land that is in contact with a boundary.
- 1.4 All landowners in the **Urban/Rural Interface Area** (All land south from Mt Horner West Road, west of Water Supply Road and Pettit Lane and thereafter south and west of Brand Highway to Kailis Drive) have the option of either installing and maintaining a 3 metre wide firebreak, or a 20 metre wide slashed or heavily grazed firebreak to a maximum height of 100mm immediately inside and along all boundaries of land.
- 1.5 Ensure minimum vertical clearance of 4 metres is maintained along all firebreaks to reduce fire truck obstruction.

TOWN SITE LAND

Land situated within the Town Sites of Dongara Port Denison and Irwin:

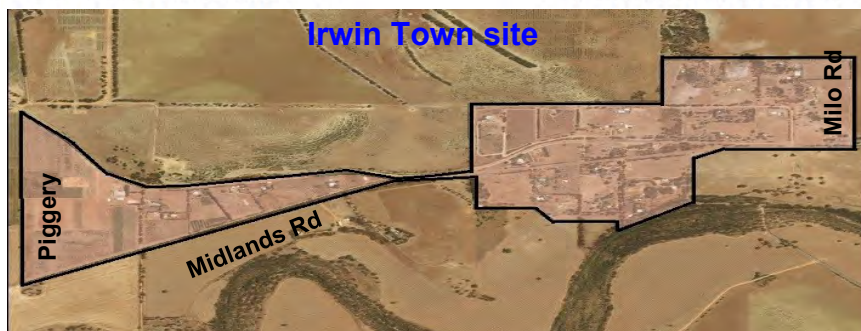
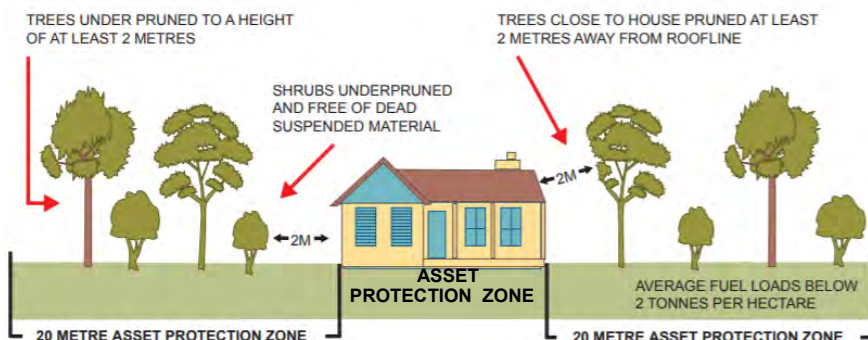
- 2.1 Maintain an Asset Protection Zone (APZ).
- 2.2 Have vacant land cleared of all flammable material (Slashed to a maximum height of 100mm) where the area of the land is 5000 square metres or less.
- 2.3 Have firebreaks not less 3 metres in width immediately inside and along all boundaries of land exceeding 5000 square metres in area.
- 2.4 Have firebreaks not less than 5 metres in width around all uncleared land that is in contact with a boundary.
- 2.5 Ensure minimum vertical clearance of 4 metres is maintained along all firebreaks to reduce fire truck obstruction.

ASSET PROTECTION ZONES (APZ)

An Asset Protection Zone for habitable buildings extends a minimum of 20 metres out from any external walls of the building, attached structures, or adjacent structures within 6 metres of the habitable building (See below example):

- Should consist of managed vegetation, reticulated lawns and gardens and other non-flammable features.
- Grass recommended to be maintained to or under 50mm in height.

Note: All properties that are subject to a pre-approved Bushfire Management Plan with the establishment of an APZ must maintain this APZ to the required standard at all times.



FOR MORE INFORMATION VISIT <https://www.irwin.wa.gov.au/fire-break-notice>

VARIATIONS TO FIREBREAK NOTICE

If it is impracticable to clear firebreaks or to remove flammable material from the land, you may apply in writing to the Shire by 25 September for an alternative solution.

FIRE INFORMATION 2023 - 2024

IMPORTANT DATES

FIREBREAKS

Required between 29 October and 15 April
(inclusive)

BURNING PERIODS: (Inclusive)

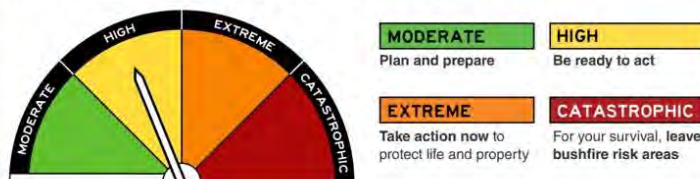
RESTRICTED - 15 October to 31 October

PROHIBITED - 1 November to 28 February

RESTRICTED - 1 March to 7 April

UNRESTRICTED - 8 April to 14 October

The Australian Fire Danger Ratings (AFDRS) levels are:



Keep up to date and check Fire Danger Ratings and
Total Fire Bans on www.emergency.wa.gov.au

Make a Bushfire Plan Today
<https://mybushfireplan.wa.gov.au/>

BURN PERMITS

When to obtain permits

Permits are required for burning of windrows, stubble, grass or bush at any time during the **RESTRICTED** burning periods. Permits are required for all areas. **No burning is permitted on a High or above Fire Danger Rating day during the Restricted burning period.**

How to obtain permits

Permits can be obtained from the Shire Office or from your local Permit Issuing Officer listed below. When applying for a permit you will need to provide the lot number and street name of the property for which the permit is to apply.

TOWNSITE AREAS

SHIRE OFFICE	9927 0000
Community Ranger	(M) 0427 110 237
M Butcher	(M) 0408 956 741
G Crabb	(M) 0427 150 072
H Campbell	(M) 0427 931 058
S Boyd	(M) 0427 366 557

RURAL AREAS

A Gillam	(M) 0427 717 174
G Crabb	(M) 0427 150 072
P Summers	(M) 0429 086 270

CAMPFIRES - PROHIBITED 1 October to 30 April

GARDEN REFUSE BURNING

PROHIBITED BURNING SEASON

No garden refuse is permitted to be burnt during the prohibited burning season.

RESTRICTED BURNING SEASON

Small heaps (up to one cubic metre) of garden refuse may be burnt on the ground between 6:00 pm and 11:00 pm BUT ONLY AFTER a 5 metre wide, fire-break has been cleared around the fire and at least one able bodied person is in attendance at all times. A permit is not required under these conditions.

BARBEQUES

Gas and electric barbeques are permitted at any time. **Solid fuel barbecues and pizza ovens are PROHIBITED on DFES declared Total Fire Ban Days or days of High, Extreme or Catastrophic Fire Danger Rating.**

HARVESTING OPERATIONS

No person shall operate harvesting machinery during the **RESTRICTED or PROHIBITED** burning period on any land unless they have a mobile and operational fire fighting unit with a capacity of at least 400 litres, situated in or immediately adjacent to each paddock where harvesting operations are being conducted. Harvesting operations are **PROHIBITED** on Christmas day, Boxing Day and New Years Day. It is mandatory for all operators of harvesters to be registered on the Shire of Irwin Harvest & Off-Road Activity Ban SMS service.

REGISTERING YOUR BURN

Please don't forget to register all burns during the Restricted and Un-Restricted Burning Periods with the DFES Communications Centre on **08 9395 9209**.

Failure to comply with this Firebreak Notice may result in a penalty of up to \$5,000.

A person is also liable to pay the direct costs of performing the work specified in this Notice. Penalties also apply for offenses related to burning.

TELEPHONE NUMBERS

EMERGENCY: 000 (in case of fire)

Shire of Irwin: Community Ranger 0427 110 237

Administration 9927 0000

In the event of not being able to contact anyone on these numbers, please refer to the Permit Issuing Officers listed above.



EMERGENCY SERVICES LEVY FOR A SAFER STATE

The Emergency Services Levy (ESL) helps to deliver essential fire and emergency services to keep Western Australian communities safe from natural hazards and emergencies.

Wherever you live in this big State of ours, you will see the ESL hard at work.

The ESL assists us to protect 2.7 million Western Australians by funding our ability to respond to bushfires, storms, cyclones, floods, road crashes, hazardous spills and perform search-and-rescue missions.

The levy supports around 26,000 emergency services volunteers and over 1,800 firefighters and staff from the Department of Fire and Emergency Services to provide around-the-clock fire and emergency services across WA every year.

Your ESL contribution also goes towards funding fire and emergency vehicles and aerial fleet, life-saving equipment and emergency services facilities.

To learn more about how your ESL is calculated, including information on the different ESL rates, limits and concessions visit dfes.wa.gov.au/esl

The ESL helps firefighters and emergency services volunteers to respond to 28,000 plus emergency incidents every year that includes:



Severe Weather

responding to more than 1,600 requests from the community for assistance after storm, cyclone and flood



Fire Response

fighting over 8,700 fires every year



Marine Rescue

performing more than 1,800 search-and-rescue missions at sea



Road Crash Rescue

attending more than 2,900 road crash rescues across the State





In 2023/24 the Emergency Services Levy will fund:



Triple Zero (000)

responding to 35,000 calls for emergency assistance from the community each year



Emergency WA

publishing more than 6,000 alerts and warnings to keep everyone informed during an emergency



Emergency Vehicles

powering the frontline with more than 2,000 emergency response vehicles



Aerial Fleet

dropping 10.4 million litres of fire suppressant and flying more than 1,600 firefighting, search-and-rescue and transport missions



Safety, Education and Training

reducing hazards and risks and developing firefighters and emergency services volunteers for frontline response



Bushfire Mitigation

reducing bushfire risk to protect people, property and the environment



Fire and Emergency Facilities

operating around the clock to protect communities in an emergency



Fire Investigations

investigating the cause of over 140 fire cases each year



Supporting Emergency Services

providing grants to fund Volunteer Bushfire Brigades, State Emergency Service units and Marine Rescue groups



For more information about the ESL or to request brochures in large print, Braille or another language, please call 1300 136 099 or visit dfes.wa.gov.au/esl

